

WBC REGIONAL DEVELOPERS PANEL

WHAT ARE WE BUILDING?

The Panel

Bill May, *Miller & Smith*

Fred Rothmeijer, *MRP Realty*

Bob Elliott, *Washington Real Estate Investment Trust*

Rick Hausler, *Insight Property Group*

Donna Shafer, *Cityline Partners*

Moderator – Chuck Claar, *Hubert Construction*

Presentation 5:30 to 7:00 p.m.

Reception 7:00 to 8:00 p.m.

February 27, 2013



WBC REGIONAL DEVELOPERS PANEL

PROGRAM SPONSORS





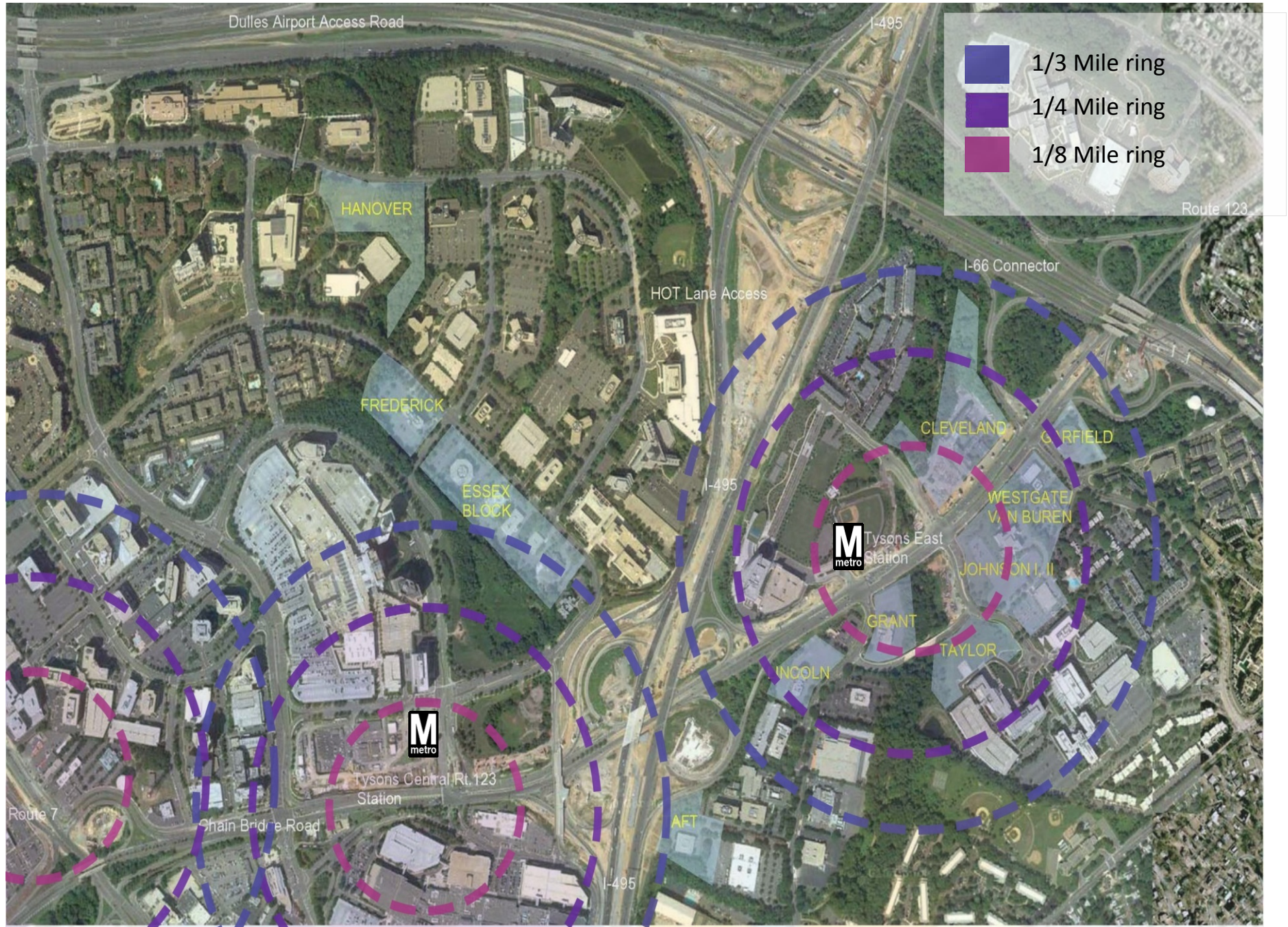
TYSONS REDEVELOPMENT



Development



Development Density Rings



Development





ARBOR ROW



8ac. Public Park and Athletic Fields Facility

- Office
3 Buildings, 910K SF
- Residential
3 Buildings, 1.2M SF
- Hotel
250 rooms, 170K SF
- Retail
Ground Floor, 58K SF



PARKER RODRIGUEZ, INC.
Planning | Urban Design | Landscape Architecture

Overall Site Plan





ARBOR ROW



shalom baranes associates architects

**Block A
Residential**

PARKER RODRIGUEZ, INC.
Planning | Urban Design | Landscape Architecture





ARBOR ROW



PARKER RODRIGUEZ, INC.
Planning | Urban Design | Landscape Architecture

Cityline
PARTNERS



ARBOR ROW



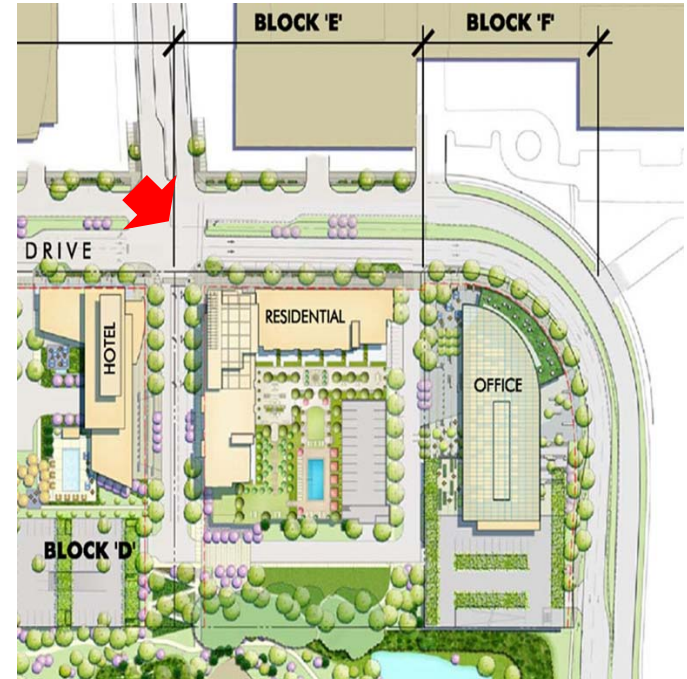
PARKER RODRIGUEZ, INC.
Planning | Urban Design | Landscape Architecture

Urban Plaza





ARBOR ROW



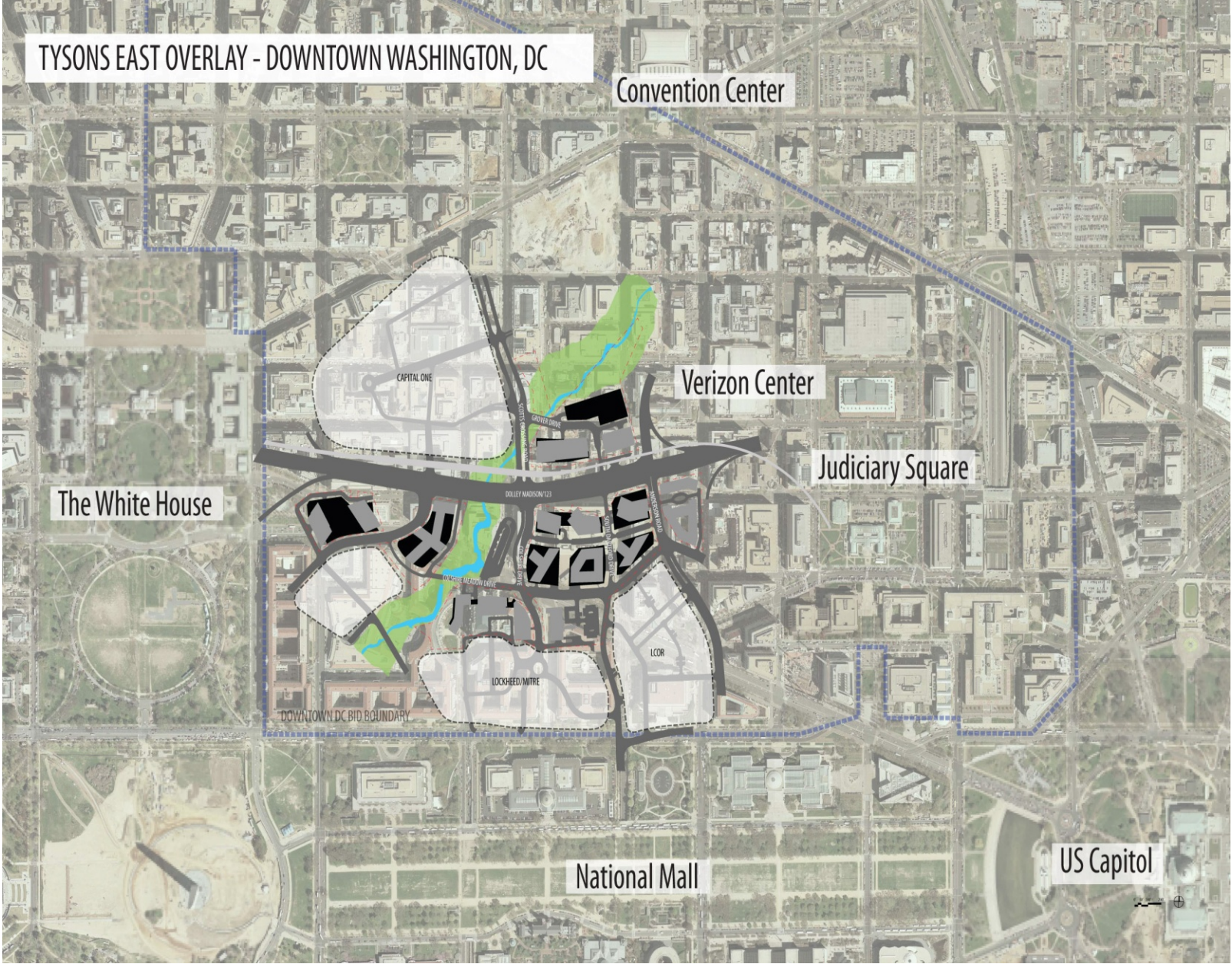
PARKER RODRIGUEZ, INC.
Planning | Urban Design | Landscape Architecture

Block D Hotel and Block E
Residential



Development





TYSONS EAST OVERLAY - DOWNTOWN WASHINGTON, DC

Convention Center

Verizon Center

Judiciary Square

The White House

National Mall

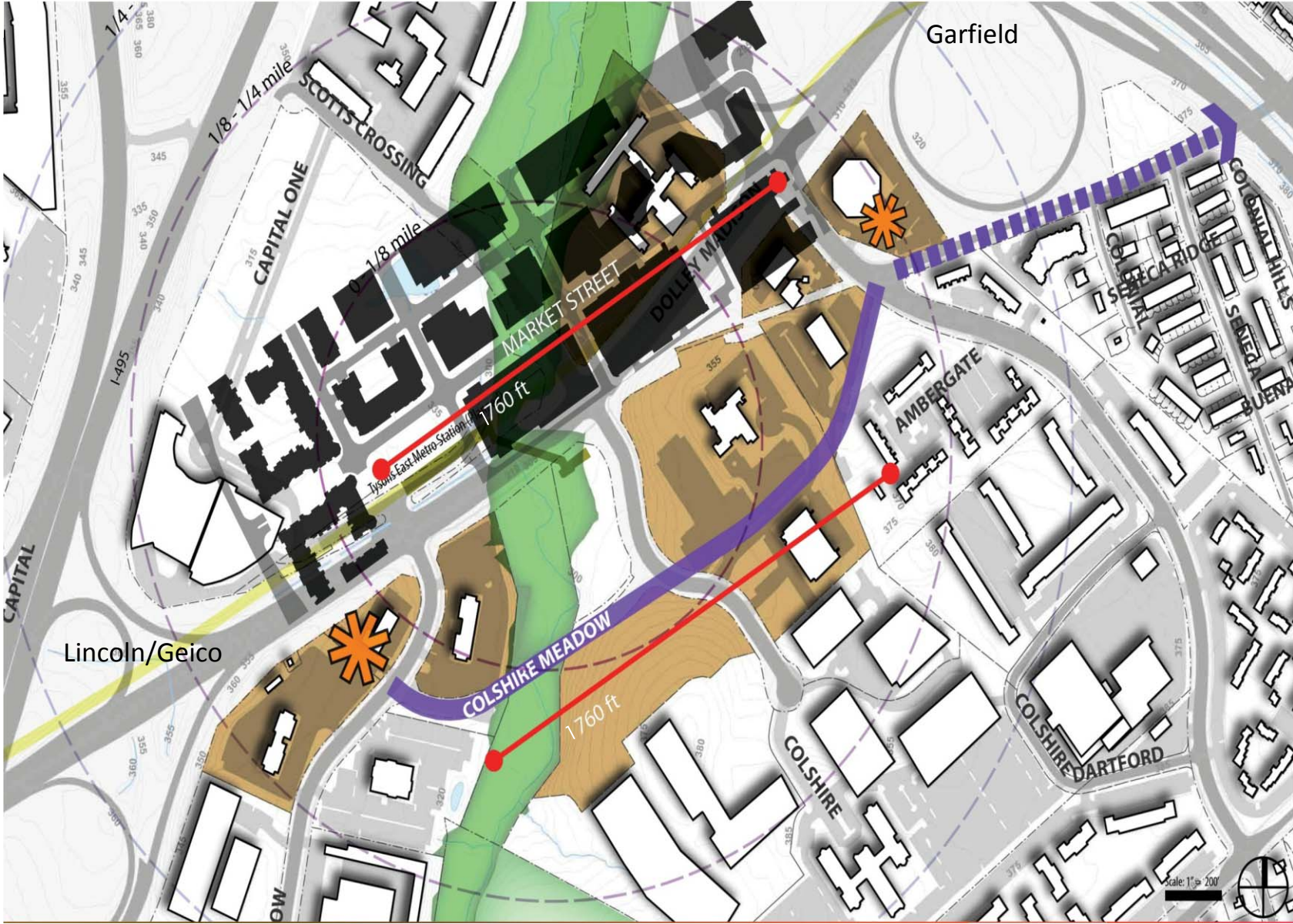
US Capitol

SCOTTS RUN STATION

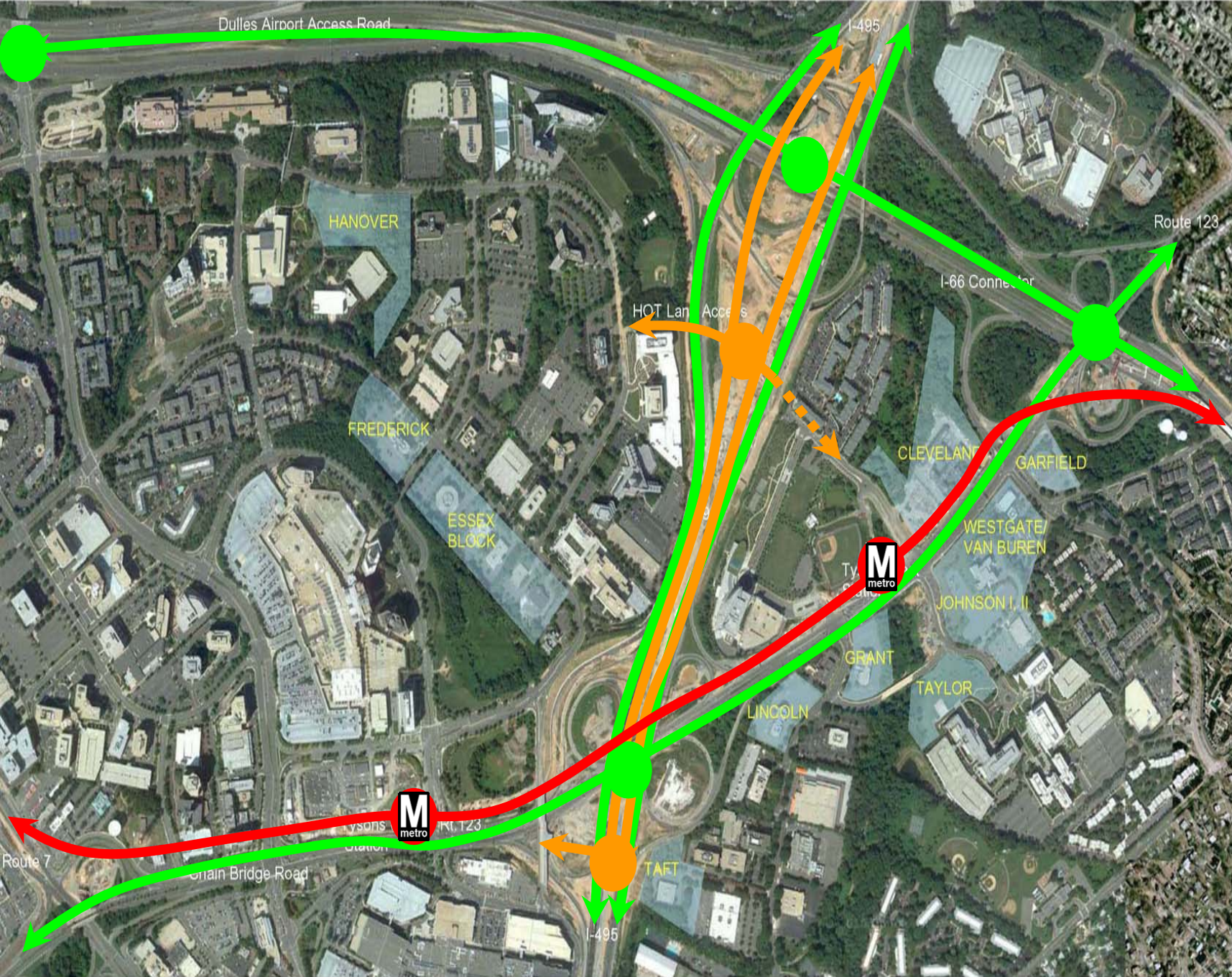
- **Office**
11 Buildings, 4.8M SF
- **Residential**
9 Buildings, 3.1M SF
- **Hotel**
320 rooms, 218K SF
- Retail**
Ground Floor, 170K SF

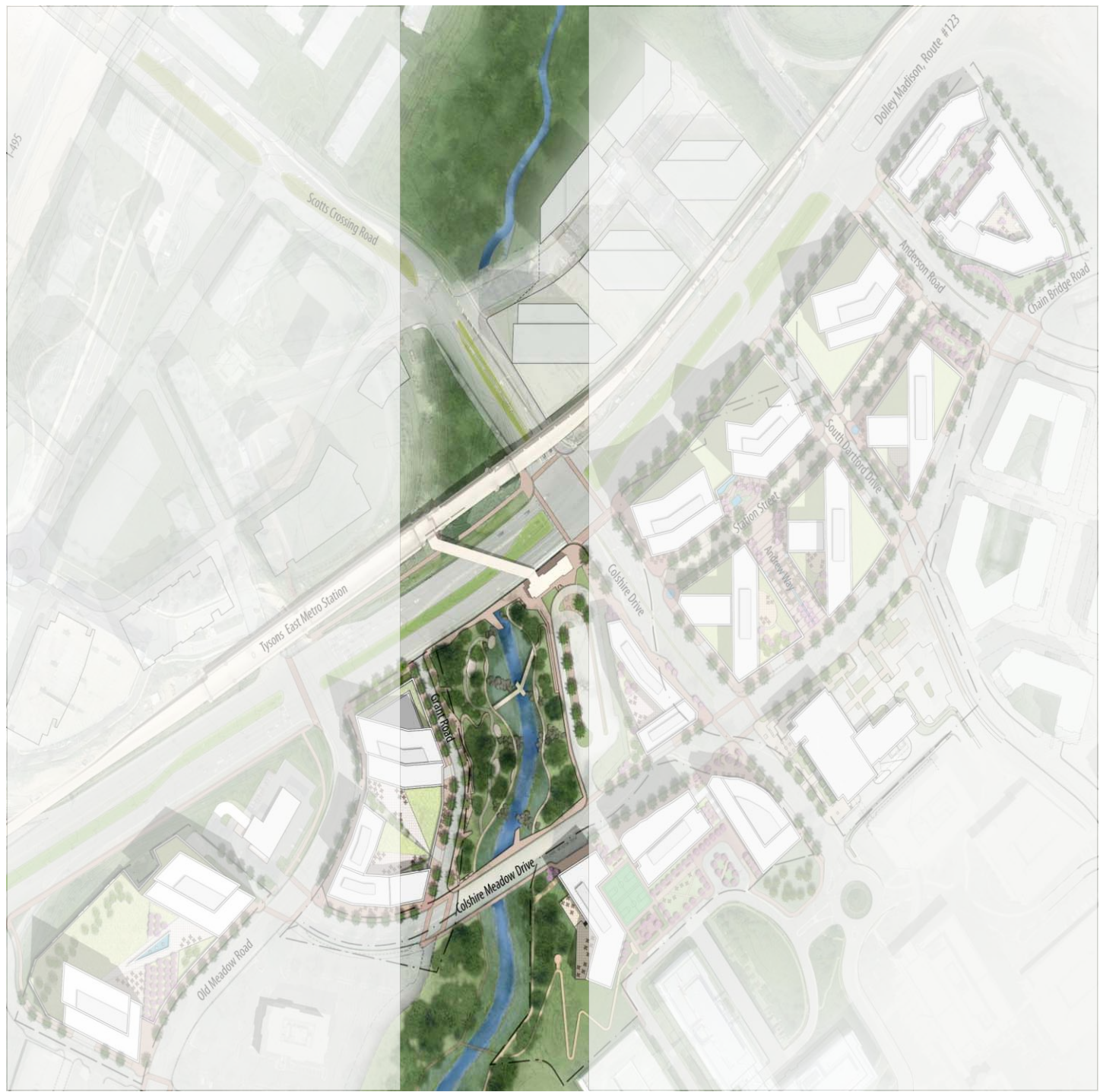


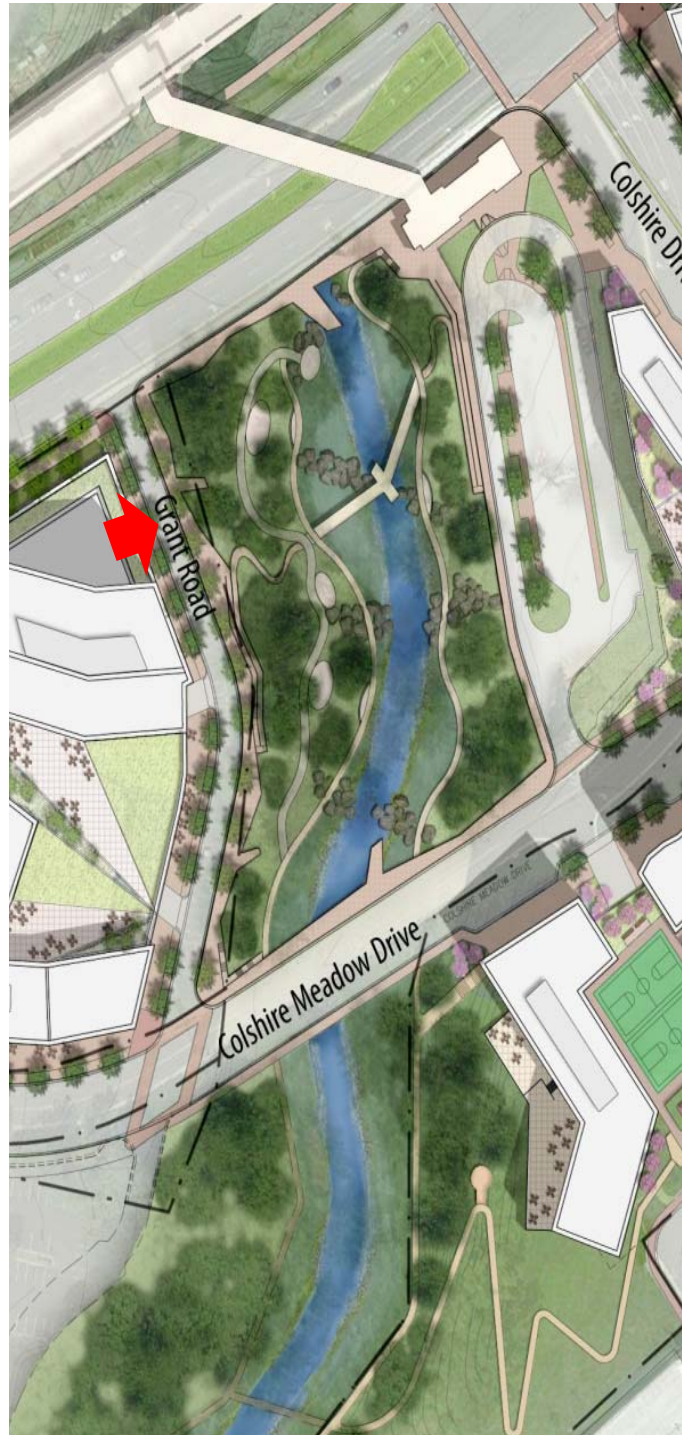
Existing Conditions vs. scale of Reston Town Center



Regional Road Network Access









Residential Gateway
Site



Overall
Rendering



WASHINGTON BUILDING CONGRESS

The Washington Building Congress is a professional trade association made up of over 1,000 companies and individuals from a variety of disciplines, all with an active interest or involvement in the Washington metropolitan area real estate, design and construction community.

The WBC was established in 1937 as an “*umbrella organization*” to represent the collective interests of the industry, provide education and networking opportunities, and promote the professional advancement of our members.